

Interwoven | January 13th – March 10th, 2018



Erika Diamond
Airline Series: Three Fates Floating
2016
Hand woven alpaca tapestry
24"x48"
\$6800



Heather Jones
Stolen from the Sea
2017
Cotton
80" x 60"
\$1700



Kevin Cole
Heaven Help Us All (II)
2017
Acrylic on paper
22" x 14" Framed
\$1500



Kevin Cole
Heaven Help Us All (I)
2017
Acrylic on paper
22" x 14"
Framed \$1500



Heather Jones
Look How They Shine for You
Cotton
20" x 20"
\$500

Interwoven | January 13th – March 10th, 2018



Judith Scott
 Untitled, ND
 Found objects with yarn, fiber and thread
 32 x 7 x 6.5 inches
 Courtesy of George and Linda Kurtz
 NFS



Tim Harding
 Shroud – Falling Man
 Dupioni silk and organza
 118 x 42 x 2d inches
 \$14,000

Tim Harding
 Shroud – Ascending Man
 Dupioni silk and organza
 118 x 42 x 2d inches
 \$14,000



Jappie King Black
 Little Bird(s) 1,2,3,4,5
 Grapevine bark
 approx. 6" x 3"
 \$75.00 Each

Interwoven | January 13th – March 10th, 2018



Jappie King Black
Dragon Lady
Grapevine bark, fiber, wax, wire
approx. 36" x 16"
\$500.00



Jappie King Black
Dragon
Grapevine bark
approx. 40" x 12"
\$400.00



Jappie King Black
Disguise
Grapevine bark, fiber, wax, wire
approx. 12" x 6"
\$150.00

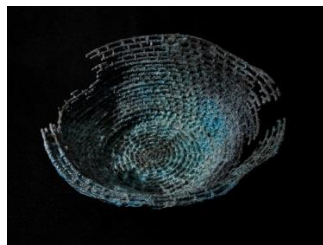


Jappie King Black
Fish Lady
Grapevine bark, fiber, wax, wire
approx. 18" x 10"
\$300.00

Interwoven | January 13th – March 10th, 2018



Jappie King Black
Mermaid
Grapevine bark, fiber, wax, wire
approx. 16" x 8"
\$300.00



Jappie King Black
Large Lace Weave Fragment #1
Bronze, lost wax casting
approx. 14 dia" x 5 h"
\$2,000.00



Jappie King Black
Blue Note
Bronze, lost wax casting
approx. 6 dia" x 2 h"
\$500.00



Jappie King Black
Broken Lace Weave
Bronze, lost wax casting
approx. 6 dia" x 2 h"
\$400.00

Broken Rim Lace Weave
Bronze, lost wax casting
approx. 8 dia" x 2 h"
\$300.00

Interwoven | January 13th – March 10th, 2018



Orly Genger
Untitled (black)
Rope and paint
38 x 28 x 1.5
Courtesy of Sara and Michelle Vance Waddell
NFS



Erika Diamond
CPR Series: Heimlich
Hand woven alpaca tapestry
20" x 20"
\$2600



Erika Diamond
CPR Series: Check for Breathlessness
2016
Hand woven alpaca tapestry
24"x24"
\$3600



Erika Diamond
CPR Series: Mouth to Mouth
2016
Hand woven alpaca tapestry 24"x24"
\$3600



Tim Harding:
Visage #2
Silk and Linen
49h x 45w x 2d inches
\$7000

Interwoven | January 13th – March 10th, 2018



Yvette Kaiser Smith
Flex Blox
83"h x 20"w x 12"d
Crocheted fiberglass and polyester resin
\$8000



Sheila Hicks
Foret Bleue I
2001
Plaited stitch: milliner's synthetic plaited banding, cotton
12 $\frac{3}{4}$ x 6 $\frac{1}{4}$ inches (20 $\frac{1}{4}$ x 12 $\frac{3}{8}$ x 1 Framed)
Courtesy of Neil Tetkowski and Olga Valle Tetkowski
NFS



Heather Jones
Shellshock
Cotton
54.5" x 66.5"
\$1500



Ed Bing Lee
FOUR AND TWENTY (black birds baked in a pie)
2017
Hemp, waxed linen, linen, cotton floss.
Base plastic showing cut outs of birds
8 x 12 x 12 inches
\$9,500

Interwoven | January 13th – March 10th, 2018



Ed Bing Lee
LIFE IS JUST (bowl of cherries)
2015
Linen, waxed linen, ribbons, plastic base.
12 x 18 x 18 inches
\$9,500



Ed Bing Lee
PROVERBIAL WORM
2015
Metallic ribbon, synthetic ribbon and cord,
linen, waxed linen; plastic base.
8 x 5 x 5 inches.
\$1200



Ed Bing Lee
LITTLE GREEN APPLES
2015
Synthetic ribbon, hemp, waxed linen, linen;
wood/plastic base.
5 x 5 x 5 inches
\$1200



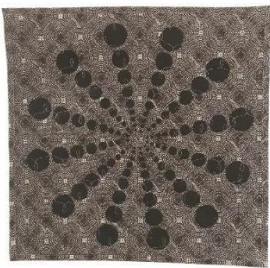
Tim Harding
Venn Diagram Green
46"h x 39"w
Deconstructed silk
\$4600

Interwoven | January 13th – March 10th, 2018



Jim Volmer
Hypnotic Behavior
Fused glass and steel
39 x 17 x 8 inches
\$8500

Other Works Available



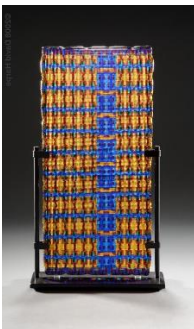
Heather Jones
Springfield
Cotton
22.5" x 22.5"
\$500



Jim Volmer
Name That Square
Fused glass and steel
16 x 16 x 4 inches
\$2600



Jim Volmer
Poppy
Fused glass and steel
16 x 16 x 4 inches
\$2600



Jim Volmer
Blue Streak
Fused glass and steel
17 x 9.5 x 3 inches
\$1650